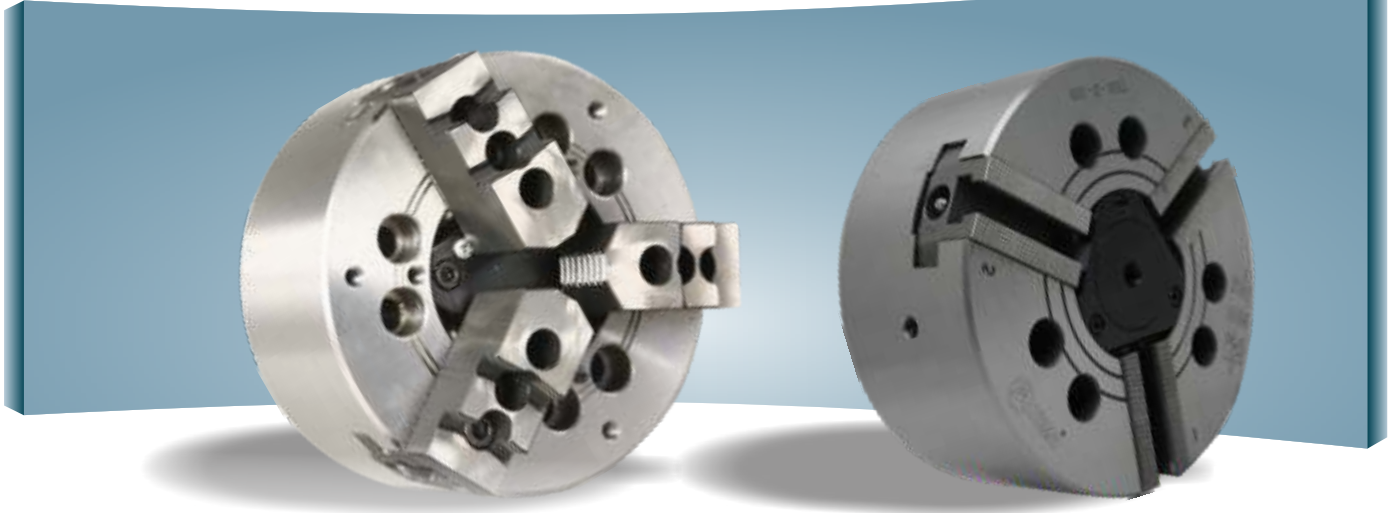




www.tuma.com.tr

AÇIK MERKEZ HİDROLİK AYNALAR - THA
OPEN CENTER POWER CHUCKS - THA

AÇIK MERKEZ HİDROLİK AYNA LAR - THA OPEN CENTER POWER CHUCKS - THA



THA AÇIK MERKEZ HİDROLİK AYNA LAR, 2-3 VEYA AYAKLI TİP LER THA WEDGE TYPE OPEN CENTER POWER CHUCKS, 2-3 AND 4 JAWS VERSIONS

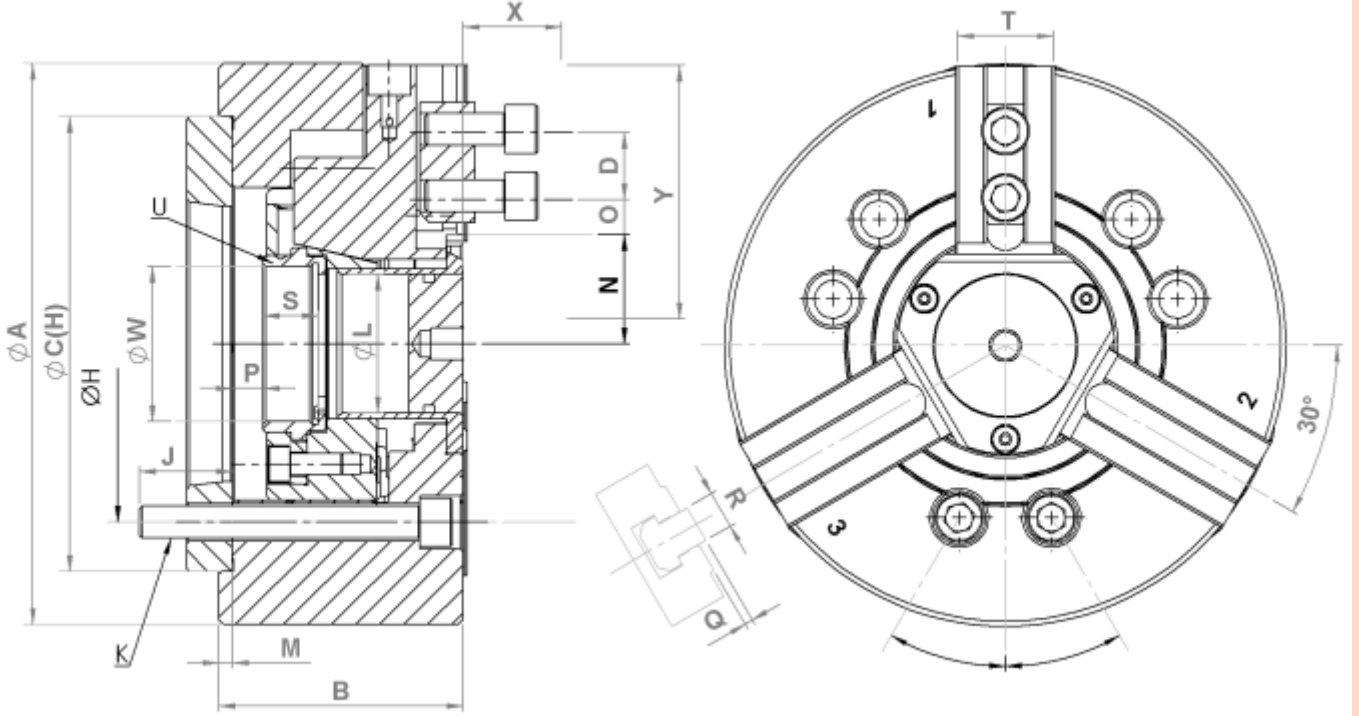
- Taban ayak diğeri 1.5mm x 60° - 3mm x 60° / Serration 1.5mm x 60° - 3mm x 60°
- Standart baskı flanş ISO-A / Mounting ISO-A
- Hareketli parçalar alaşım çelikten imal edilmiş, sertleştirilmiş ve tahtalanmıştır. / All parts are made of alloyed steel.
- 2,3 ve 4 ayaklı modelleri mevcuttur. / 2,3 and 4 jaws chucks available
- Aksesuarlar, baskı flanş civata ve somunlar. / Accessories, Mounting bolts and nuts

TEKNİK ÖZELLİKLER / TECHNICAL SPECIFICATIONS

Sipari Kodu	Ayna Ebadı	Ayak Sayısı	Diğ Çapı	Baskı Flanş	Delik Çapı	Ayak Sıroku	Piston Stroku	Standart Sert Üst Ayak ile Sıkma Çapı	Max. Sıkma Kuvveti	Max. Çekme Kuvveti	Taban Ayak Diğeri	Devir	Ağırlık
Order Code	Chuck Size	No. of Jaws	Outside Diameter	Flange No.	Thru-Hole	Jaw Stroke	Shifter Stroke	Clamp Dia With Standart Hard Top Jaw	Max. Gripping Force	Max. Drawbar Full Force	Base Jaw Serrations	Speed	Weight
			Mm		Mm	Mm	Mm	Min Max	Kgf	Kgf	Mm	Rpm	Kg
THA-06-T1-2-A5-45	6"	2	169	A5	45	ø5.5	12	15 169	5812	2243	1.5x60°	6000	13.5
THA-08-T1-2-A6-52	8"	2	210	A6	52	ø7.4	16	20 210	9075	3558	1.5x60°	5000	23
THA-10-T1-2-A8-75	10"	2	254	A8	75	ø8.8	19	25 254	11319	4385	1.5x60°	4200	35
THA-12-T1-2-A8-91	12"	2	305	A8	91	ø10.6	23	30 304	14990	5812	1.5x60°	3300	56.5
THA-06-T1-3-A5-45	6"	3	169	A5	45	ø5.5	12	15 169	5812	2243	1.5x60°	6000	13.5
THA-08-T1-3-A6-52	8"	3	210	A6	52	ø7.4	16	20 210	9075	3558	1.5x60°	5000	23
THA-10-T1-3-A8-75	10"	3	254	A8	75	ø8.8	19	25 254	11319	4385	1.5x60°	4200	35
THA-12-T1-3-A8-91	12"	3	305	A8	91	ø10.6	23	30 304	14990	5812	1.5x60°	3300	56.5
THA-15-T1-3-A11-117.5	15"	3	381	A11	117.5	ø10.6	23	50 381	18355	7240	1.5x60° - 3x60°	2500	111
THA-18-T1-3-A11-117.5	18"	3	450	A11	117.5	ø10.6	23	60 450	18355	7240	1.5x60° - 3x60°	2000	164
THA-21-T2-3-A15-180	21"	3	510	A15	180	ø10.6	24	120 510	23861	9177	3x60°	1800	190
THA-24-T2-3-A15-205	24"	3	610	A15	205	ø12	26	150 610	23861	9177	3x60°	1400	270
THA-08-T1-4-A6-52	8"	4	210	A6	52	ø7.4	16	20 210	9075	3558	1.5x60°	5000	23
THA-10-T1-4-A8-75	10"	4	254	A8	75	ø8.8	19	25 254	11319	4385	1.5x60°	4200	35
THA-12-T1-4-A8-91	12"	4	305	A8	91	ø10.6	23	30 304	14990	5812	1.5x60°	3300	56.5

AAIK MERKEZ HİDROLİK AYNALAR - THA
OPEN CENTER POWER CHUCKS - THA

TEKNİK DETAYLAR / TECHNICAL DETAILS



ÖLÇÜLER / DIMENSIONS

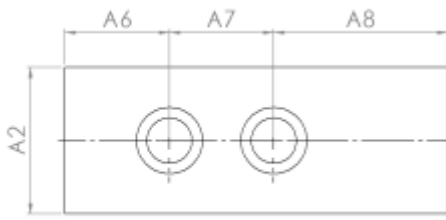
Ayna Ebadı Chuck Size	A	B	C	D	H	J	K	L	M	N	O	O	P	P	Q	R	S	T	U	W	X	Y
	(H6)									Min	Max	Min	Max	Min					Max			
6"	169	81	140	20	104.78	16	6-M10x80	45	5	32	22.75	9.25	11	-1	2	12	19	31	55x2	60	37	73
8"	210	91	170	25	133.35	20	6-M10x90	52	5	38.7	29.75	14.75	14.5	-1.5	2	14	20.5	35	60x2	66	38	95
10"	254	100	220	30	171.45	22	6-M16x100	75	5	51	33.75	14.25	8.5	-10.5	2	16	25	40	85x2	94	43	110
12"	305	110	220	30	171.45	23	6-M16x110	91	6	61.3	45.75	15.75	8	-15	2	21	28	50	100x2	106	51	130
15"	381	133	300	43	235	35	6-M20x135	117.5	6	82	45.25	16.75	7	-16	5	22	43	62	130x2	139	66	165
18"	450	133	300	43	235	35	6-M20x135	117.5	6	82	79.75	16.75	7	-16	5	22	43	62	130x2	139	66	165
21"	510	134	380	60	330.2	35	6-M24x135	180	6	112.5	69	23	11	-12	5	25	38	65	190x2	206	73	180
24"	610	147	520	60	463.66	35	6-M24x150	205	6	139.9	87.5	24.5	16	-10	5	25	38	65	215x3	230	73	180

HİDROLİK AYNA YEDEK PARÇALARI POWER CHUCKS SPARE PARTS

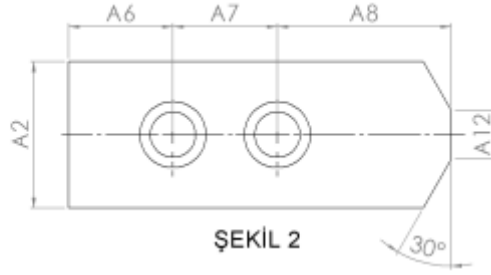


STANDART YUMUŞAK AYAKLAR
STANDARD SOFT JAWS

YÜKSEK YUMUŞAK AYAKLAR
HIGH SOFT JAWS

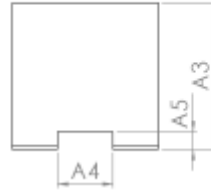
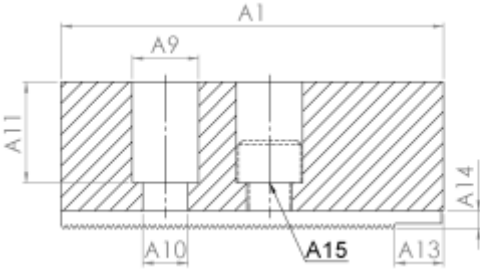


ŞEKİL 1



ŞEKİL 2

TEKNİK DETAYLAR
TECHNICAL DETAILS



STANDART YUMUŞAK AYAKLAR / STANDARD SOFT JAWS

Ayna Çapı Chuck Dia	Sipari Kodu Order Code	Şekil Figure	Di Formu Serration	A1	A2	A3	A4	A5	A6	A7	A8	A9	A10	A11	A12	A13	A14	A15
6"	TYA-06-T1-3-12-32	2	1.5X60°	73	32	32	12	5	15	20	38	17	11	22	10	8.5	1.5	M10
8"	TYA-08-T1-3-14-36	2	1.5X60°	95	36	36	14	5	24	25	46	19	13	21	12	8	1.5	M12
10"	TYA-10-T1-3-16-42	2	1.5X60°	110	42	42	16	5	30	30	50	19	13	29	14	14	1.5	M12
12"	TYA-12-T1-3-18-52	2	1.5X60°	130	52	52	18	5	39	30	61	23	15	32	16	16	1.5	M14
12"	TYA-12-T1-3-21-52	2	1.5X60°	130	52	52	21	5	39	30	61	25	17	32	16	16	1.5	M16
15"	TYA-15-T1-3-22-62	2	1.5X60°	165	62	62	22	8	37	43	85	32	21	38	18	30	1.5	M20
15"	TYA-15-T1-3-25.5-52	2	1.5X60°	135	52	60	25.5	5	26	43	66	32	21	39	18	18	1.5	M20

YÜKSEK YUMUŞAK AYAKLAR / HIGH SOFT JAWS

Ayna Çapı Chuck Dia	Sipari Kodu Order Code	Şekil Figure	Di Formu Serration	A1	A2	A3	A4	A5	A6	A7	A8	A9	A10	A11	A12	A13	A14	A15
6"	TYA-06-T1-3-12-58	2	1.5X60°	73	32	58	12	5	15	20	38	17	11	48	10	8.5	1.5	M10
8"	TYA-08-T1-3-14-60	2	1.5X60°	95	36	60	14	5	24	25	46	19	13	45	12	8	1.5	M12
10"	TYA-10-T1-3-16-80	2	1.5X60°	110	42	80	16	5	30	30	50	19	13	67	14	14	1.5	M12
12"	TYA-12-T1-3-18-80	2	1.5X60°	130	52	80	18	5	39	30	61	23	15	60	16	16	1.5	M14
12"	TYA-12-T1-3-21-80	2	1.5X60°	130	52	80	21	5	39	30	61	25	17	60	16	16	1.5	M16
15"	TYA-15-T1-3-22-100	2	1.5X60°	165	62	100	22	8	37	43	85	32	21	76	18	30	1.5	M20
15"	TYA-15-T1-3-25.5-100	2	1.5X60°	135	52	100	25.5	5	26	43	66	32	21	79	18	18	1.5	M20

HİDROLİK AYNA YEDEK PARÇALARI POWER CHUCKS SPARE PARTS



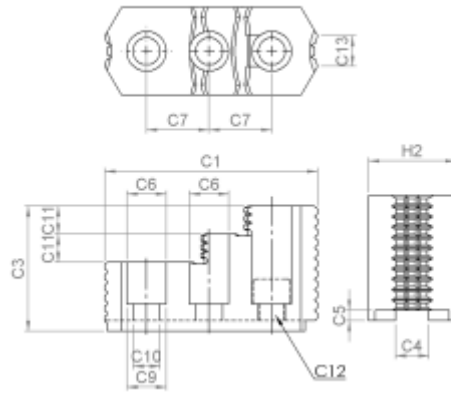
SERT AYAKLAR
HARD JAWS



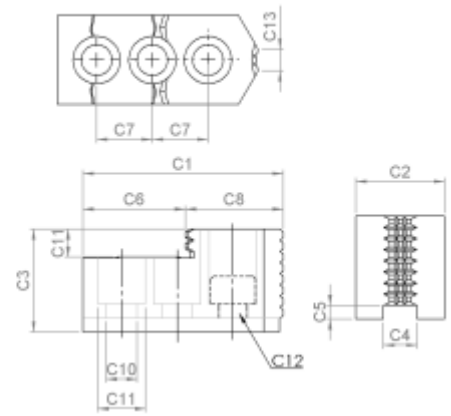
T SOMUN
T NUTS

TEKNİK DETAYLAR TECHNICAL DETAILS

ŞEKİL-1

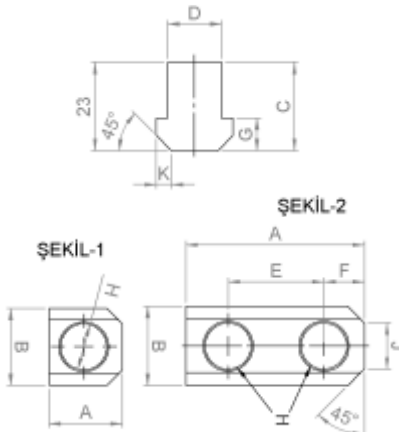


ŞEKİL-2



SERT AYAKLAR / HARD JAWS

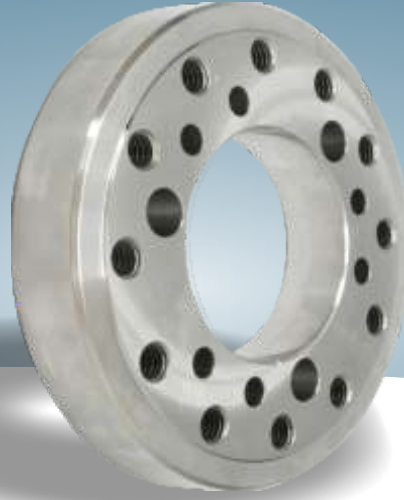
Ayna Çapı Chuck Dia	Sipari Kodu Order Code	ekil Figure	Di Formu Serration	C1	C2	C3	C4	C5	C6	C7	C8	C9	C10	C11	C12	C13
6"	TSA-06-T1-3-12-1	2	1.5X60°	67	31	36	12	5	39.5	20	27.5	17	11	10	M10	11
8"	TSA-08-T1-3-14-1	1	1.5X60°	86	35	51	14	5	31	25	18	19	13	12	M12	12
10"	TSA-10-T1-3-16-1	1	1.5X60°	99.5	40	54	16	5	43	30	17	19	13	13	M12	15
12"	TSA-12-T1-3-18-1	2	1.5X60°	103	50	52	18	5	62.5	30	40.5	22	15	17	M14	30
12"	TSA-12-T1-3-21-1	2	1.5X60°	103	50	52	21	4	62.5	30	40.5	25	17	17	M16	30
15"	TSA-12-T1-3-22-1	1	1.5X60°	149	62	86	22	8	63	43	34	32	21	20	M20	40
15"	TSA-15-T1-3-25.5-1	1	1.5X60°	149	62	86	25.5	5	63	43	34	32	21	20	M20	40



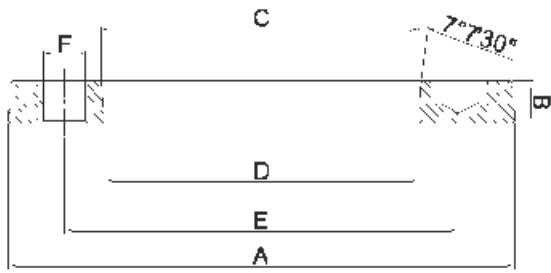
T SOMUN / T NUTS

Ayna Çapı Chuck Dia	Sipari Kodu Order Code	ekil Figure	A	B	C	D	E	F	G	H	J	K
6"	THA-TS-06-11-1	1	15	17.5	18.5	12	-	7.5	7.5	M10	8	2.5
6"	THA-TS-06-12-2	2	36	17.5	18.5	12	20	8	7.5	M10	8	2.5
8"	THA-TS-08-14-1	1	19	20	23	14	-	10	8.5	M12	12	4
8"	THA-TS-08-14-2	2	46.5	20.5	20.5	14	25	10.5	8.5	M12	12	4
10"	THA-TS-10-16-2	2	51	22.5	21.5	16	30	11	8.5	M12	11	3
12"	THA-TS-12-18-2	2	55.5	26.5	33.5	18	30	11.5	13.5	M14	12	5
12"	THA-TS-12-21-2	2	55.5	29.5	27.8	21	30	12	11.5	M18	13	4.5
15"	THA-TS-15-22-2	2	73	34	39.5	22	43	15	19.5	M20	13	5
15"	THA-TS-15-25.5-1	1	42	35	39.5	25.5	-	21	19	M20	-	25

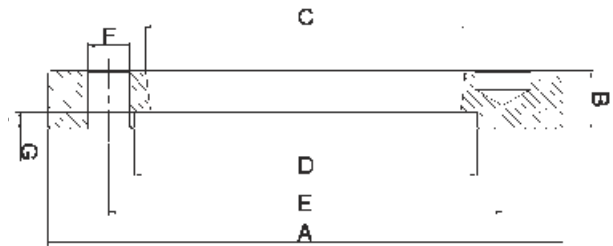
HİDROLİK AYNA YEDEK PARÇALARI POWER CHUCKS SPARE PARTS



ŞEKİL 1



ŞEKİL 2



TEKNİK DETAYLAR
TECHNICAL DETAILS

(ŞEKİL/FIGURE 1)

FLANŞ / ADAPTER PLATES

Ayna Çapı Chuck Dia	Sipari Kodu Order Code	ekil Figure	A	B	C	D	E	F
6"	THAF-1-06-A2-5	A2-5	140	15	82.563	79.7	104.8	12
8"	THAF-1-08-A2-5	A2-5	170	22	82.563	79.7	104.8	11
8"	THAF-1-08-A2-6	A2-6	170	17	106.375	103	133.4	13.5
10"	THAF-1-10-A2-6	A2-6	220	25	106.375	103	133.4	13.5
10"	THAF-1-10-A2-8	A2-8	220	18	139.719	136	171.4	17
12"	THAF-1-12-A2-6	A2-6	280	27	106.375	103	133.4	13.5
12"	THAF-1-12-A2-8	A2-8	280	27	106.375	136	171.4	17
15"	THAF-1-15-A2-8	A2-8	300	33	139.719	136	171.4	17
15"	THAF-1-15-A2-11	A2-11	300	22	196.869	192.1	235	21

(ŞEKİL/FIGURE 2)

FLANŞ / ADAPTER PLATES

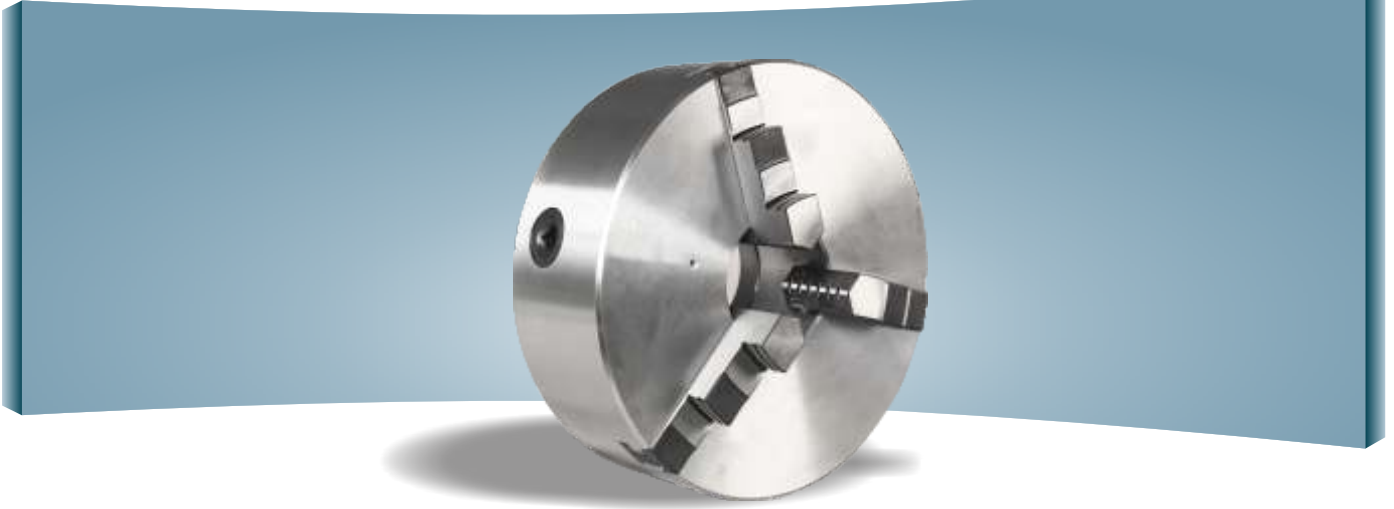
Ayna Çapı Chuck Dia	Sipari Kodu Order Code	ekil Figure	A	B	C	D	E	F
6"	THAF-2-06-A2-4	A2-4	135	22	63.513	61	82.6	11
6"	THAF-2-06-A2-5	A2-5	135	22	82.563	91	104.8	11
8"	THAF-2-08-A2-5	A2-5	170	17.5	82.563	91	104.8	11
8"	THAF-2-08-A2-6	A2-6	170	17.5	106.375	103	133.4	13
10"	THAF-2-10-A2-6	A2-6	225	25	106.375	103	133.4	13
10"	THAF-2-10-A2-8	A2-8	225	25	139.719	149	171.4	18
12"	THAF-2-12-A2-6	A2-6	230	27	106.375	103	133.4	13
12"	THAF-2-12-A2-8	A2-8	230	27	139.719	149	171.4	18
15"	THAF-2-15-A2-8	A2-8	280	35	139.719	149	171.4	17
15"	THAF-2-15-A2-11	A2-11	280	35	196.869	192.1	235	21



www.tuma.com.tr

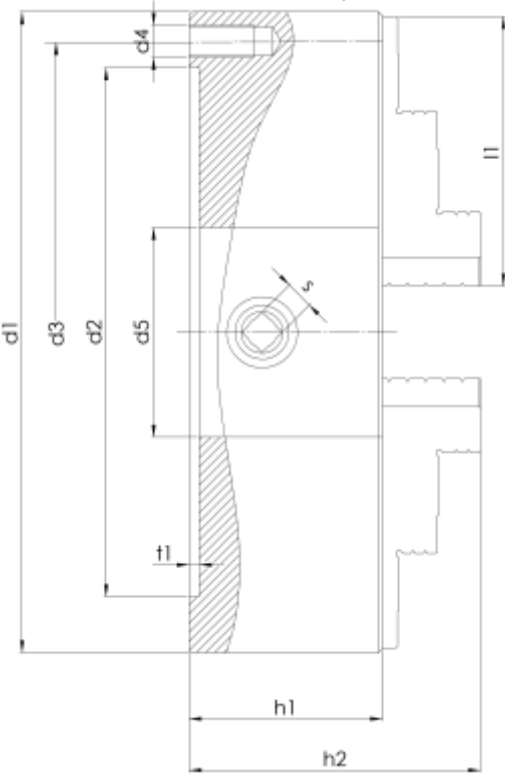
SÜPER HASSAS
TORNA AYNALARI TEK PARÇA AYAKLI
SUPER PRECISION
LATHE CHUCKS / ONE - PIECE JAW

SÜPER HASSAS ÜNİVERSAL AYINALAR SUPER PRECISION LATHE CHUCKS



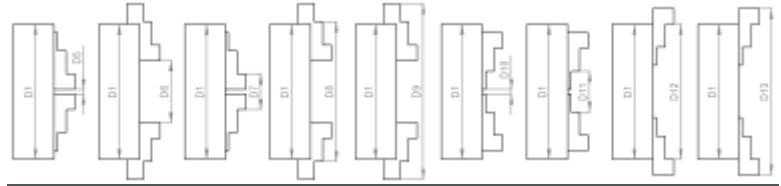
TEKNİK DETAYLAR TECHNICAL DETAILS

DIN 6350 Form A
Silindirik Merkezi Başı
Cylindrical Centre Mount



- Ölçüleri DIN 6350'ye göre dir. Devir sayısı, sıkma kuvveti, salgı ve yalpa değerleri DIN 6386'daki teslim şartlarına uygundur.
Dimensions and mounting according to DIN 6350. Rpm's clamping force, precision and balance data according to DIN 6386
 - Çelik Gövde / Steel body
 - Sertleştirilmiş, dengeli ve yüksek yüzey kalitesinde spiral
Hardened and balanced scroll with high grade surface quality
 - Kademelendirilmiş, sertleştirilmiş ve ta lanmış ters düz ayaklar.
Stepped, hardened and ground inward and outward jaws.
 - Ayak dış yüzeylerinin her iki tarafı ta lanmıştır.
Jaw flanks ground on both sides.
- Universal takım tezgahlarında, divizörlerde ve döner tablolarda kullanılır.
Universal use on lathes, dividing heads and rotary tables

SIKMA ÇAPLARI / CLAMPING AREA

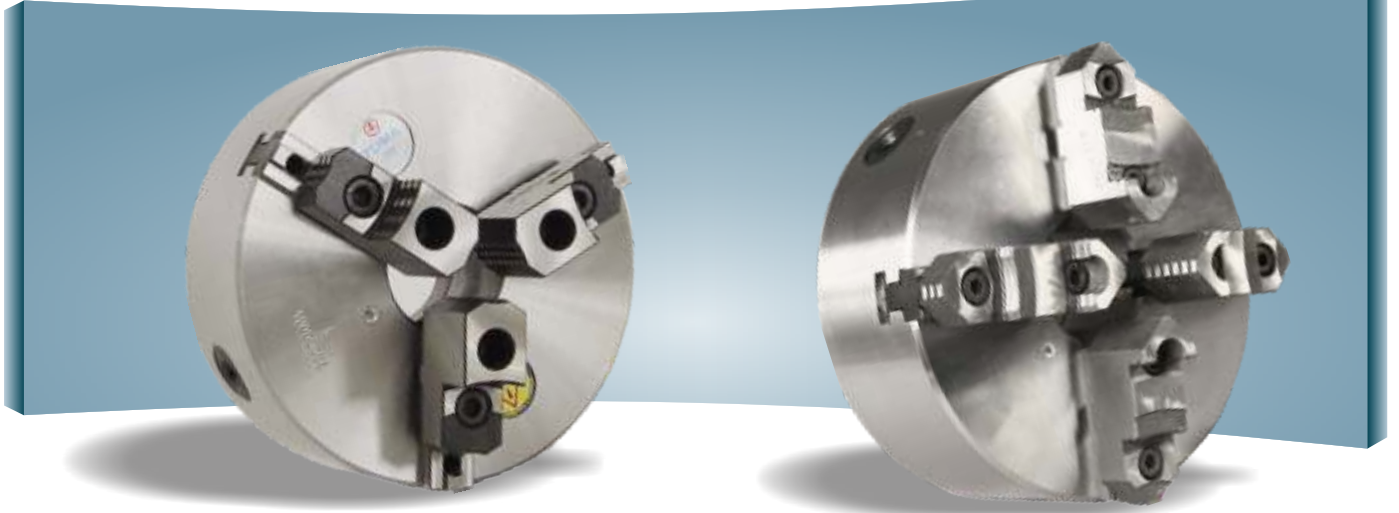


d1	d5 min	d6 max	d7 min	d8 max	d9 max	d10 min	d11 min	d12 max	d13 max
100	3	33	25	87	115	3	32	93	115
125	3	42	34	112	148	3	38	120	148
160	3	68	42	154	200	3	48	160	200
200	4	90	52	194	250	4	60	200	250
250	5	110	62	240	310	5	75	250	310
315	10	145	80	299	385	10	96	315	385
400	20	200	100	380	480	20	120	400	480

TEKNİK ÖZELLİKLER / TECHNICAL SPECIFICATIONS

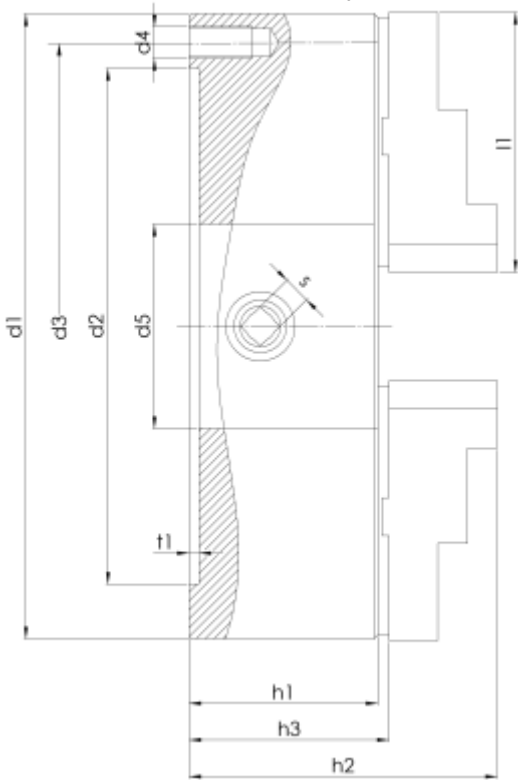
Sipari Kodu / Order Code	d1	d2H6	d3	d4	d5	h1	h2	l1	t1	s	Ağırlık / Weight Kg
103 USA-V1 / 104 USA-V1	100	70	83	3xM8	20	50	68	44.3	3	8	2.4
123 USA-V1 / 124 USA-V1	125	95	108	3xM8	32	56	79.5	55	4	9	4
163 USA-V1 / 164 USA-V1	160	125	140	3xM10	47	66	93.5	70	4	10	7.2
203 USA-V1 / 204 USA-V1	200	160	176	3xM10	55	75	104.8	83	4	11	12.7
253 USA-V1 / 254 USA-V1	250	200	224	3xM12	76	85	117.5	101.5	5	12	22.5
313 USA-V1 / 314 USA-V1	315	260	286	3xM16	103	95	139.4	131	5	14	40.5
403 USA-V1 / 404 USA-V1	400	330	362	3xM16	136	108	156.4	159	5	17	77.5

SÜPER HASSAS DÖNDÜRÜLEBİLİR AYAKLI AYNALAR SUPER PRECISION LATHE CHUCKS WITH REVERSIBLE TOP JAWS



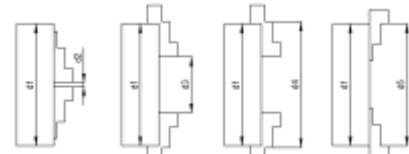
TEKNİK DETAYLAR TECHNICAL DETAILS

DIN 6350 Form A
Silindirik Merkezi Başı
Cylindrical Centre Mount



- malat Tezgahları için uygundur. Çünkü bu ayaklar döndürülerek hem düz ayakların hemde ters ayakların görevlerini yaparlar. Ayrıca yuvarlak üst ayaklar takılarak da kullanılabilir.
Used on production machines. As reversible jaws can be exchanged for other top or special jaws.
- Çelik Gövde / Steel body
- Sertleştirilmiş, dengeli ve yüksek yüzey kalitesinde spiral
Hardened and balanced scroll with high grade surface quality
- Kademelendirilmiş, sertleştirilmiş ve taflanmış ters düz ayaklar.
Stepped, hardened and ground inward and outward jaws.
- Ayak dış yüzeylerinin her iki tarafı taflanmıştır.
Jaw flanks ground on both sides.

SIKMA ÇAPLARI / CLAMPING AREA

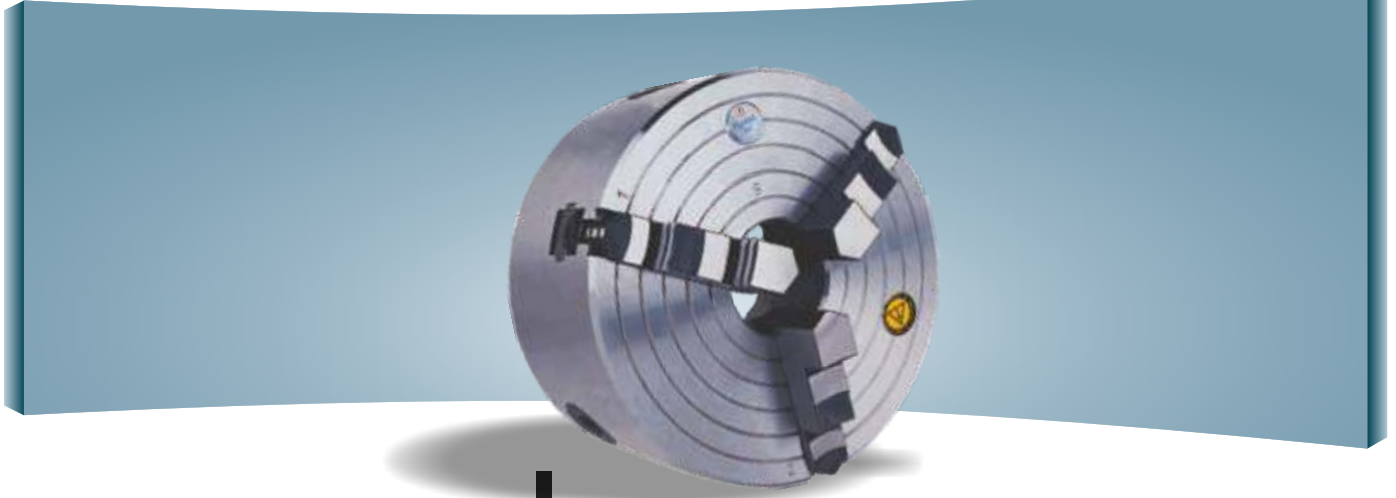


d1	d2 min	d3 max	d4 max	d5 min
100	3	33	92	100
125	3	42	115	125
160	4	68	154	160
200	4	90	194	200
250	5	110	240	250
315	10	145	295	315
400	20	200	375	400

TEKNİK ÖZELLİKLER / TECHNICAL SPECIFICATIONS

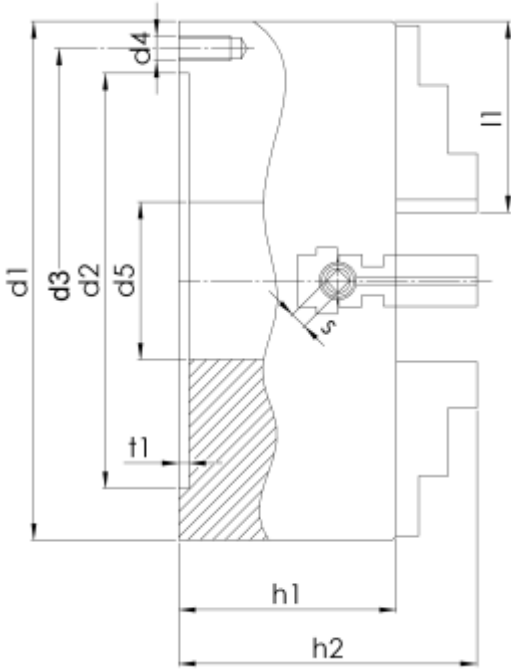
Sipari Kodu / Order Code	d1	d2H6	d3	d4	d5	h1	h2	h3	l1	t1	s	Ağırlık / Weight Kg	
103 DSA-V1 / 3 Ayak / 3 Jaws	104 DSA-V1 / 4 Ayak / 4 Jaws	100	70	83	3xM8	20	50	80.4	53.4	49	3	8	2.7
123 DSA-V1	124 DSA-V1	125	95	108	3xM8	32	56	95.4	60.9	58	4	9	4.5
163 DSA-V1	164 DSA-V1	160	125	140	3xM10	47	66	107.9	69.9	70	4	10	7.8
203 DSA-V1	204 DSA-V1	200	160	176	3xM10	55	75	121.4	81.9	83	4	11	14.2
253 DSA-V1	254 DSA-V1	250	200	224	3xM12	76	85	142.5	93	101.5	5	12	24
313 DSA-V1	314 DSA-V1	315	260	286	3xM16	103	95	155.1	100.6	131	5	14	41.9
403 DSA-V1	404 DSA-V1	400	330	362	3xM16	136	108	175.2	116.6	159	5	17	79.3

SÜPER HASSAS AYARLANABİLİR AYAKLI AYNALAR SUPER PRECISION ADJUSTABLE JAW LATHE CHUCKS



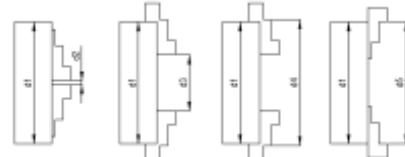
TEKNİK DETAYLAR TECHNICAL DETAILS

DIN 6351 Form A
Silindirik Merkezi Ba lama
Ayaklar merkezi sıklmalı ve tek tek ayarlanabilir
Cylindrical Centre Mount
Self-centering and individually adjustable



- Bu sistem DIN 6350' ye göre imal edilen aynaların daha gelişmiş ve sağlamdır. Hem döndürülebilir üst ayaklar taban ayaklarla beraber merkezi sıkma özelliğine sahiptirler. Hem de taban ayaklarda aralarında bulunan bir ayar vidasının yardımı ile birbirinden bağımsız olarak kaçık sıkma özelliğine sahiptirler.
- Bu ayakların yardımı ile salgısız bir parçası yapılabilir. Ölçüleri ve montaj şekli DIN 6351' e göre dir.
- Basicly it's a scroll system acc. to DIN 6350, but due to an adjustable spindle between base and reversible jaws, base jaws together with reversible jaws can be centered and also adjusted independently of one another. Thus it's possible to chuck irregular but similar work-pieces Dimensions and mounting as per DIN 6351
- malat Tezgahları için uygundur. Çünkü bu ayaklar döndürülerek hem düz ayakların hemde ters ayakların görevlerini yaparlar. Ayrıca yuvarlak üst ayaklar takılarak da kullanılabilir. Used on production machines. As reversible jaws can be exchanged for other top or special jaws.
- Çelik Gövde / Steel body
- Sertleştirilmiş, dengeli ve yüksek yüzey kalitesinde spiral Hardened and balanced scroll with high grade surface quality
- Kademelendirilmiş, sertleştirilmiş ve taşlanmış ters düz ayaklar. Stepped, hardened and ground inward and outward jaws.

SIKMA ÇAPLARI / CLAMPING AREA



d1	d2 min	d3 max	d4 max	d5 min
100	4	27	96	102
125	5	44	115	122
160	5	66	160	160
200	6	86	194	200
250	8	110	235	246
315	10	145	295	305
400	20	195	360	370

TEKNİK ÖZELLİKLER / TECHNICAL SPECIFICATIONS

Sipari Kodu / Order Code	d1	d2H6	d3	d4	d5	h1	h2	l1	t1	s	Ağırlık / Weight Kg
3 Ayak / 3 Jaws 4 Ayak / 4 Jaws											
103 ASA-V1 104 ASA-V1	100	70	83	3xM8	20	68	86	56	3	4	4.2
123 ASA-V1 124 ASA-V1	125	95	108	3xM8	32	76	100	56	4	4	5.6
163 ASA-V1 164 ASA-V1	160	125	140	3xM10	47	85	118	69	4	5	10
203 ASA-V1 204 ASA-V1	200	160	176	3xM10	55	97	130	85	4	5	18.7
253 ASA-V1 254 ASA-V1	250	200	224	3xM12	76	105	144	90	5	8	30
313 ASA-V1 314 ASA-V1	315	260	286	3xM16	103	118	164	125	5	9	52
403 ASA-V1 404 ASA-V1	400	330	362	3xM16	136	124	171	130	5	9	69